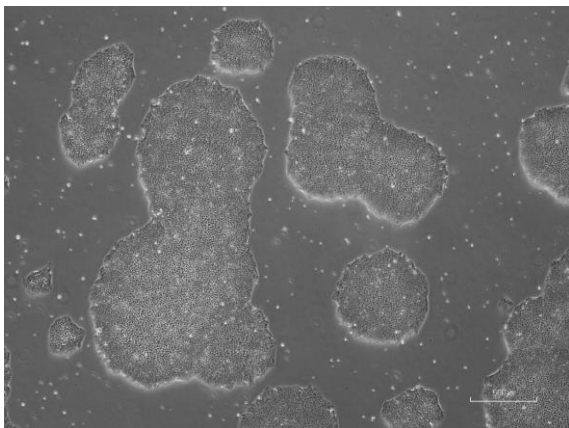
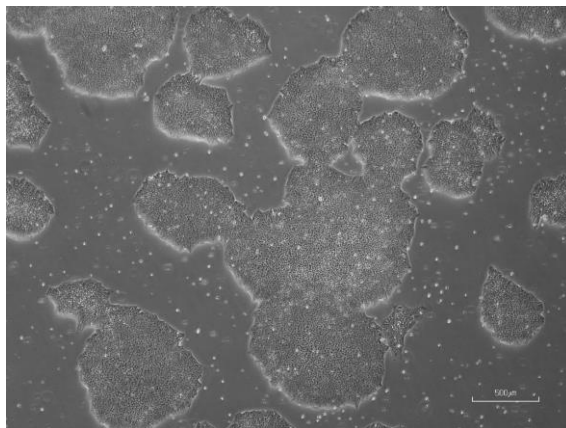


【 CiRA-jk-0065 】 Morphology of iPSC colonies

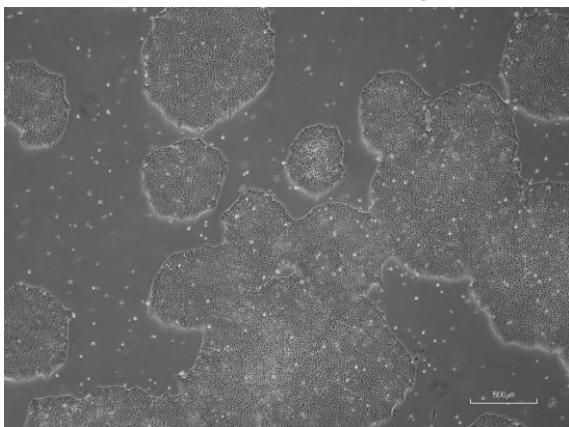
CiRA -jk-0065-A: passage-3



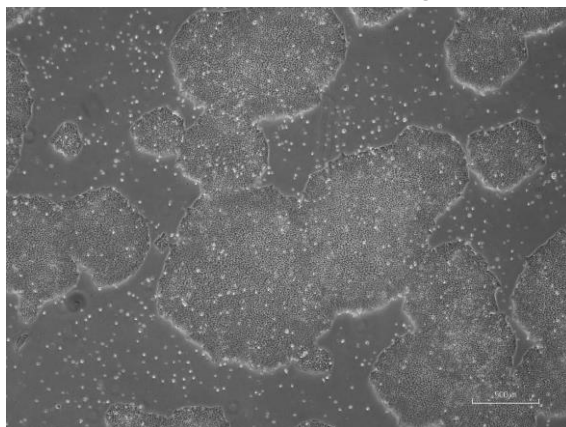
CiRA -jk-0065-B: passage-3



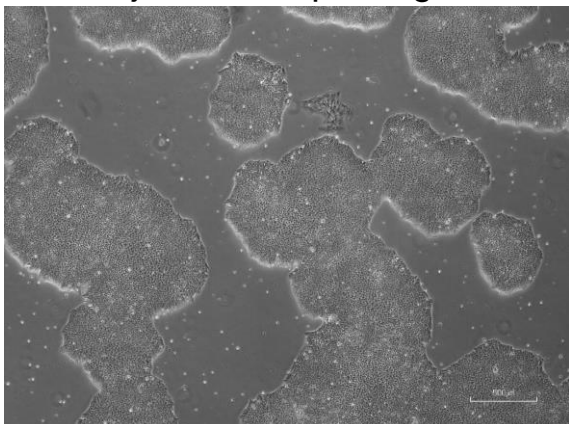
CiRA -jk-0065-C: passage-3



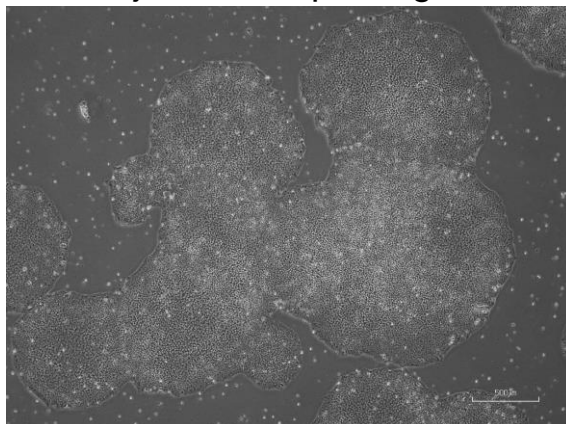
CiRA -jk-0065-D: passage-3



CiRA -jk-0065-E: passage-3



CiRA -jk-0065-F: passage-3



(All images were captured at 4x magnification)